

Business tendency in manufacturing, construction, trade and services – February 2020

21.02.2020

General business climate indicator and its components in the last six months

↓ 1,6

General business climate indicator for manufacturing (NSA)

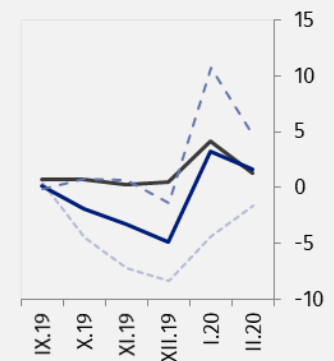
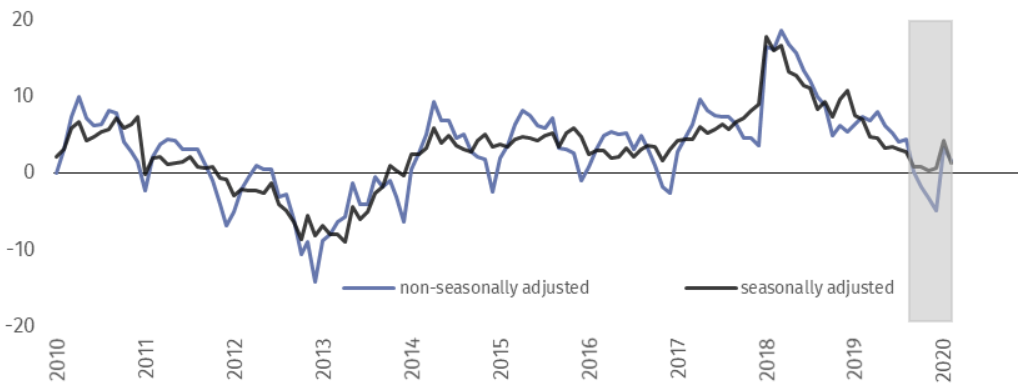
Entities from sections: manufacturing, accommodation and food services as well as financial and insurance activities evaluate general business climate indicator in February worse than one month ago. Entrepreneurs of the other scrutinised kinds of activities evaluate it similarly as in January. In most of the areas “diagnostic” component is getting worse and “forecast” component is getting better in comparison with the previous month.

— seasonally adjusted indicator (SA)
 — non-seasonally adjusted indicator (NSA)
 - - - "diagnostic" component (NSA)
 ····· "forecast" component (NSA)



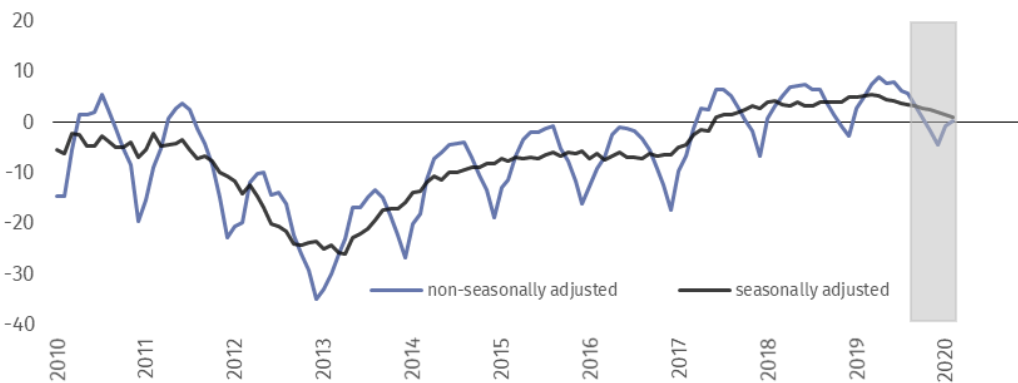
Manufacturing – general business climate indicator (graph 1)

In February general business climate indicator (NSA) takes the value plus 1.6 that is lower than in January (plus 3.2) and in February of the last six years.



Construction – general business climate indicator (graph 2)

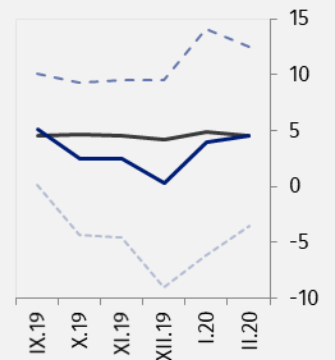
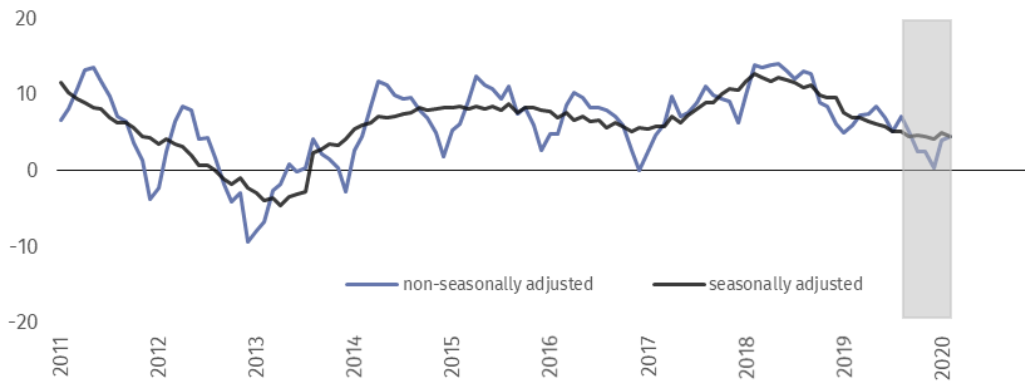
In the current month general business climate indicator (NSA) takes the value plus 0.1 that is higher than in the previous 3 months but lower than in February of the last two years.





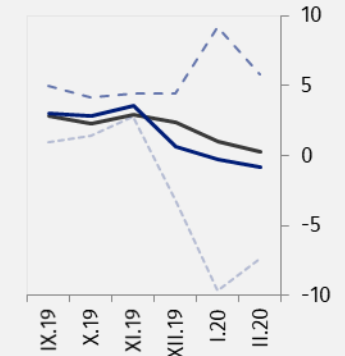
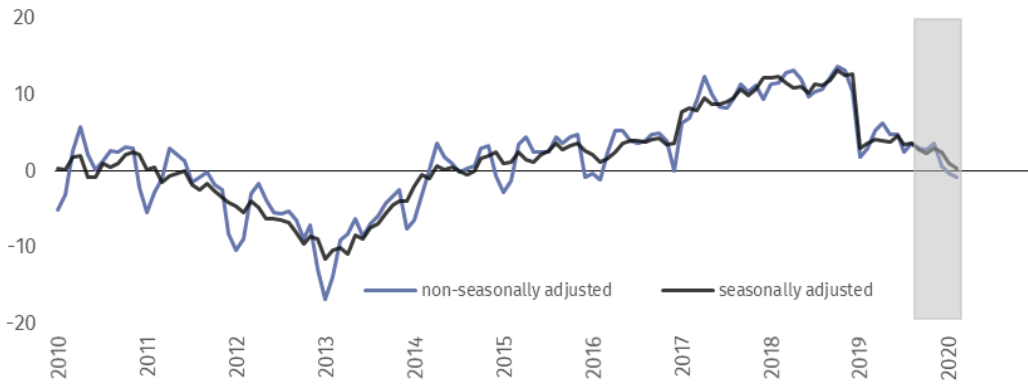
Wholesale trade – general business climate indicator (graph 3)

In the current month general business climate indicator (NSA) takes the value plus 4.5 – similarly to January (plus 4.0) but lower than in February of the last two years.



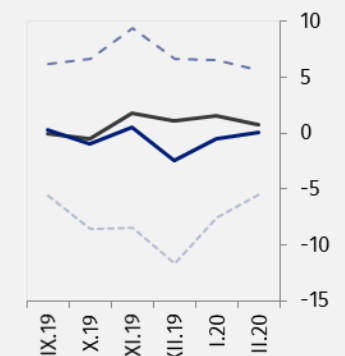
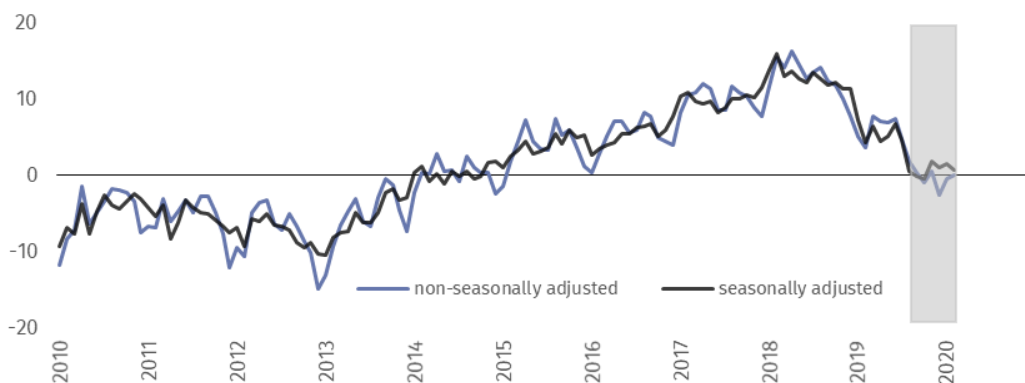
Retail trade – general business climate indicator (graph 4)

In the current month general business climate indicator (NSA) takes the value minus 0.8 – similarly to January (minus 0.3) but lower than in analogous month of the last three years when it took positive values.



Transportation and storage – general business climate indicator (graph 5)

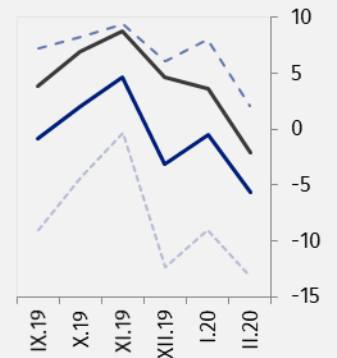
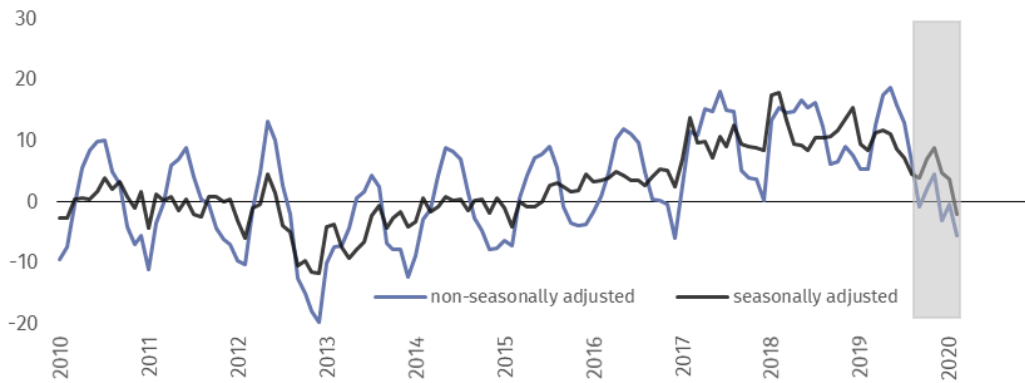
In the current month general business climate indicator (NSA) takes the value plus 0.1 – close to its value in January (minus 0.5) but lower than in February of the last five years.





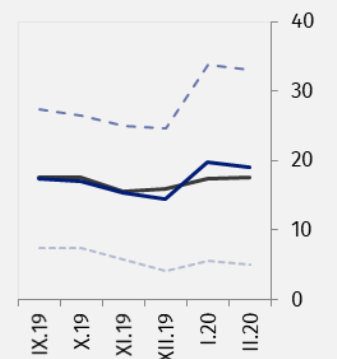
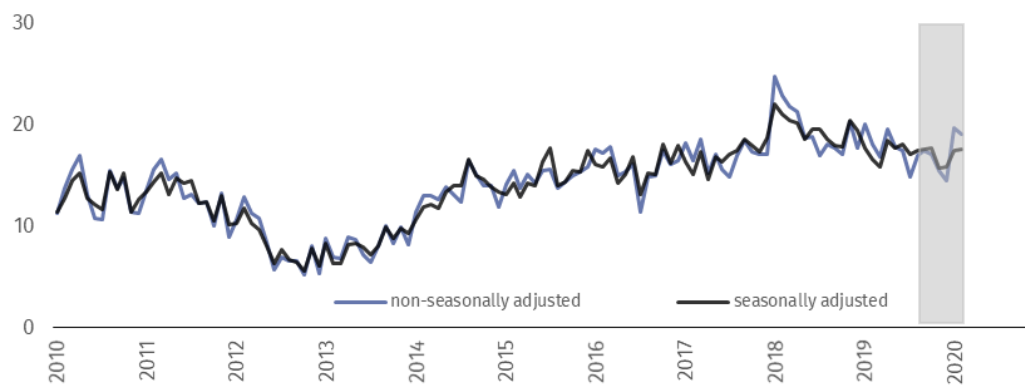
Accommodation and food service activities – general business climate indicator (graph 6)

In the current month general business climate indicator (NSA) takes the value minus 5.6 that is lower than in January (minus 0.5) and in analogous month of the last four years when it took positive values.



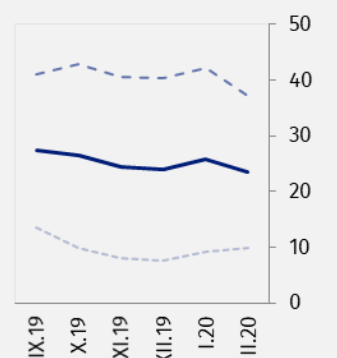
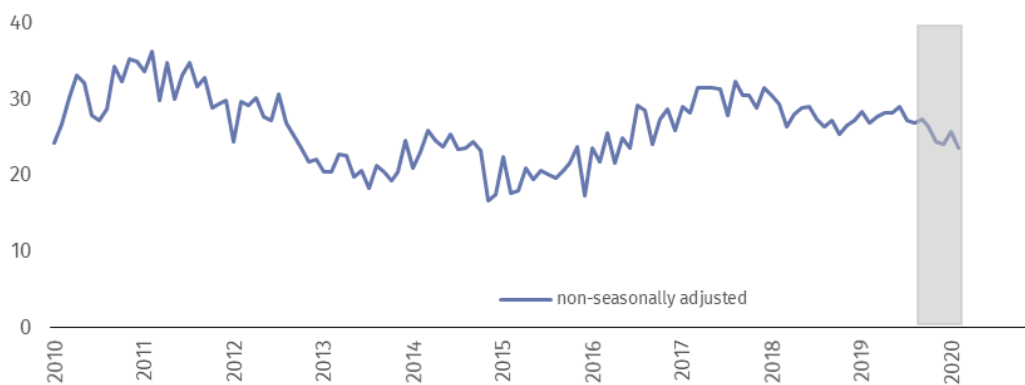
Information and communication – general business climate indicator (graph 7)

In February general business climate indicator (NSA) takes the value plus 19.0 that is close to its value one month ago (plus 19.7) and one year ago (plus 18.0).











Financial and insurance activities – general business climate indicator (graph 8)¹

In February general business climate indicator (NSA) takes the value plus 23.6 that is lower than one month ago (plus 25.7) and in February of the last three years.



¹ Time series does not require to be seasonally adjusted. Non-seasonally adjusted data can be analyzed and interpreted in the same way as seasonally adjusted data.

Table 1. Business climate indicators by kind of activity

	SPECIFICATION	Analogous month of the previous year	Previous month	Current month	Long-term average
Manufacturing 	seasonally adjusted indicator (SA)	7,1	0,8	4,5	3,9
	non-seasonally adjusted indicator (NSA)	6,4	-4,9	3,2	3,9
	“diagnostic” component (NSA)	11,8	-1,4	10,7	-0,6
	“forecasting” component (NSA)	1,0	-8,4	-4,3	8,3
Construction 	seasonally adjusted indicator (SA)	5,0	2,2	1,7	-1,1
	non-seasonally adjusted indicator (NSA)	2,7	-4,6	-0,7	-1,1
	“diagnostic” component (NSA)	10,4	3,6	9,6	-5,4
	“forecasting” component (NSA)	-5,0	-12,8	-11,0	3,1
Wholesale trade 	seasonally adjusted indicator (SA)	7,6	4,2	4,9	6,1
	non-seasonally adjusted indicator (NSA)	5,0	0,3	4,0	6,1
	“diagnostic” component (NSA)	13,4	9,5	14,1	10,2
	“forecasting” component (NSA)	-3,5	-9,0	-6,2	1,9
Retail trade 	seasonally adjusted indicator (SA)	3,0	2,6	1,3	-3,4
	non-seasonally adjusted indicator (NSA)	1,8	0,6	-0,3	-3,4
	“diagnostic” component (NSA)	11,0	4,4	9,2	-3,4
	“forecasting” component (NSA)	-7,4	-3,2	-9,7	-3,5
Transportation and storage 	seasonally adjusted indicator (SA)	7,2	1,1	1,6	0,7
	non-seasonally adjusted indicator (NSA)	5,1	-2,5	-0,5	0,6
	“diagnostic” component (NSA)	13,5	6,7	6,5	1,0
	“forecasting” component (NSA)	-3,3	-11,7	-7,5	0,2
Accommodation and food service activities 	seasonally adjusted indicator (SA)	9,9	5,1	4,2	3,1
	non-seasonally adjusted indicator (NSA)	5,4	-3,1	-0,5	3,1
	“diagnostic” component (NSA)	9,7	6,1	8,0	1,3
	“forecasting” component (NSA)	1,1	-12,3	-9,0	4,9
Information and communication 	seasonally adjusted indicator (SA)	17,6	15,8	17,3	19,9
	non-seasonally adjusted indicator (NSA)	20,0	14,4	19,7	19,9
	“diagnostic” component (NSA)	33,1	24,6	33,7	26,3
	“forecasting” component (NSA)	6,8	4,2	5,6	13,5
Financial and insurance activities 	seasonally adjusted indicator (SA) ²
	non-seasonally adjusted indicator (NSA)	28,4	24,0	25,7	29,3
	“diagnostic” component (NSA)	43,0	40,3	42,1	34,5
	“forecasting” component (NSA)	13,7	7,6	9,2	24,1

² Time series does not require to be seasonally adjusted. Non-seasonally adjusted data can be analyzed and interpreted in the same way as seasonally adjusted data.

Prepared by:
**Macroeconomic Studies and Finance
Statistics Department**
Director Mirosław Błazej
Office: tel. (+48 22) 608 37 73

Issued by:
**The Spokesperson for the President
of Statistics Poland**
Karolina Banaszek
Mobile: (+48) 695 255 011

Press Office

Office: tel. (+48 22) 608 34 91, 608 38 04

e-mail: obslugaprasowa@stat.gov.pl



www.stat.gov.pl/en/



@StatPoland



@GlownyUrzadStatystyczny

Related information

[Business tendency in manufacturing, construction, trade and services](#)

Data available in databases

[Knowledge Database Business Tendency](#)

[Macroeconomic Data Bank](#)

Terms used in official statistics

[Business tendency](#)



This document was prepared with European Commission financial contribution. Ideas presented here are Statistics Poland notions, so they should not be seen in any cases as European Commission official opinions reflections.

