

21.12.2023

# Index numbers of construction and assembly production in November 2023 <sup>1</sup>

 **103.9**

Index number of construction and assembly production compared to November of 2022

According to preliminary data construction and assembly production (in constant prices) carried out domestically by construction enterprises employing more than 9 persons was in November 2023 by 3.9% higher than in the same period of 2022 (an increase of 4.0% in the corresponding period of 2022) and by 3.1% higher compared to October 2023 (an increase of 9.0% in the corresponding period of 2022).

**Table 1. Index numbers of construction and assembly production (constant prices)**

SPECIFICATION	11 2023		01-11 2023 <sup>2</sup>
	10 2023=100	11 2022=100	01-11 2022=100
<b>CONSTRUCTION</b>	<b>103.1</b>	<b>103.9</b>	<b>104.0</b>
Construction of buildings <sup>Δ</sup>	106.9	110.7	97.7
Civil engineering works <sup>Δ</sup>	104.3	105.3	109.8
Specialised construction activities	96.8	94.4	102.9

<sup>Δ</sup> Abbreviated form according to PKD 2007.

Construction and assembly production in November 2023, showed an annual increase in entities whose basic type of activity was construction of buildings (10.7%) and dealing mainly with civil engineering works (5.3%). The decrease carried out in entities performing specialised construction activities (5.6%).

Compared to October 2023, an increase was noted in entities dealing mainly with construction of buildings of 6.9% and whose basic type of activity was civil engineering works of 4.3%. The decrease was recorded in entities specialised construction activities of 3.2%.

In the period of January-November 2023, in relation to the same period of the previous year, an increase in the sales of construction and assembly production was noted in entities deal-

<sup>1</sup> Reported data; comprise enterprises employing over 9 persons, whose the main type of activity is included in the section F "Construction" in accordance with the Polish Classification of Activities (PKD 2007).

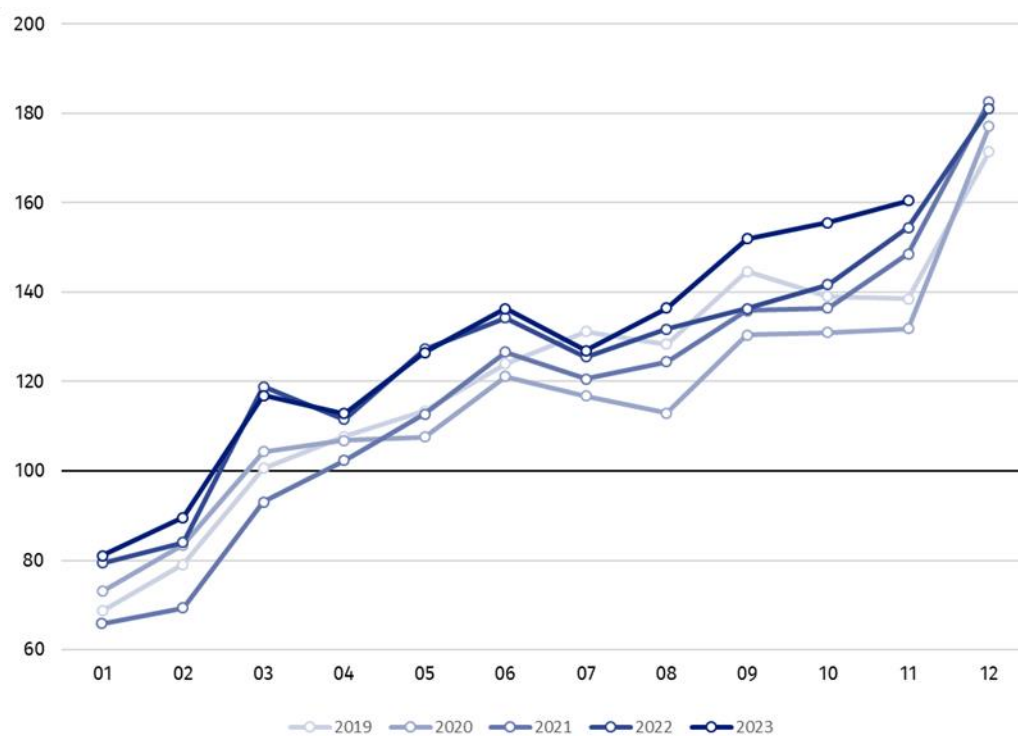
<sup>2</sup> Data including final information on production and prices in October and reported data in November.

ing mainly with civil engineering works (9.8%) and performing specialised construction activities (2.9%), whereas a decrease was recorded in entities whose basic type of activity was construction of buildings (2.3%).

Construction and assembly production in November 2023, compared to corresponding month of 2022, increased for investment works by 21.7% and decreased for restoration works by 21.0% (respectively increases of 2.7% and 5.8% in 2022).

In the period of January-November 2023, in relation to the corresponding period of 2022, there was an increase of 28.2% in the investment works and a decrease of 28.9% in the restoration works (respectively increases of 2.6% and of 12.4% in 2022).

**Chart 1. Index numbers of construction and assembly production (constant prices; average monthly base 2015=100)<sup>3</sup>**



Index number of construction and assembly production in November 2023 (in constant prices), compared to the average monthly value of 2015, was 160.5.

In November 2023, after eliminating the seasonal factors, construction and assembly production reached the level by 1.6% higher than in the corresponding month of the previous year and lower by 2.0% in comparison to October 2023.

In case of quoting Statistics Poland data, please provide information: "Source of data: Statistics Poland" and in case of publishing calculations made on data published by Statistics Poland, please include the following disclaimer: "Own study based on figures from Statistics Poland".

<sup>3</sup> Reported data for November 2023.

Prepared by:  
**Statistical Office in Lublin**

**Director Krzysztof Markowski, Ph.D.**

Phone: (+48) 695 255 301

Issued by:  
**The Spokesperson for the President of Statistics  
Poland**

**Karolina Banaszek**

Phone: (+48) 695 255 011

**Press Office**

Phone: (+48 22) 608 38 04

**e-mail: [obslugaprasowa@stat.gov.pl](mailto:obslugaprasowa@stat.gov.pl)**



[stat.gov.pl/en/](https://stat.gov.pl/en/)



[@StatPoland](https://twitter.com/StatPoland)



[@GlownyUrzadStatystyczny](https://www.facebook.com/GlownyUrzadStatystyczny)



[gus\\_stat](https://www.instagram.com/gus_stat)



[glownyurządstatystycznygus](https://www.youtube.com/glownyurządstatystycznygus)



[glownyurządstatystyczny](https://www.linkedin.com/company/glownyurządstatystyczny)

**Related information**

[Statistical Bulletin](#)

[Socio-economic situation of the country](#)

**Data available in databases**

[Knowledge Databases - Construction](#)

[Knowledge Databases - Construction \(new\)](#)

[Macroeconomic Data Bank](#)

[Macroeconomic indicators](#)

[Local Data Bank](#)

**Terms used in official statistics**

[Sale of construction and assembly production](#)

[Seasonally unadjusted index of sale of construction and assembly production in constant prices](#)

[Seasonally adjusted index of sale of construction and assembly production](#)

[Sale of construction works with an investment character](#)

[Sale of construction works with a restoration character and other works](#)