

# Index numbers of construction and assembly production in January 2023 <sup>1</sup>

21.02.2023

 **102.4**

Index number of construction and assembly production as compared to January of 2022

According to preliminary data construction and assembly production (in constant prices) carried out domestically by construction enterprises employing more than 9 persons was in January 2023 by 2.4% higher than a year before (an increase of 20.8% the year before) and by 55.1% lower compared with December 2022 (a decrease of 56.5% the year before).

**Table 1. Index numbers of construction and assembly production (constant prices)**

SPECIFICATION	01 2023	
	12 2022=100	01 2022=100
<b>CONSTRUCTION</b>	<b>44.9</b>	<b>102.4</b>
Construction of buildings <sup>Δ</sup>	58.2	89.3
Civil engineering works <sup>Δ</sup>	33.1	115.0
Specialised construction activities	53.1	107.5

<sup>Δ</sup> Abbreviated form according PKD 2007.

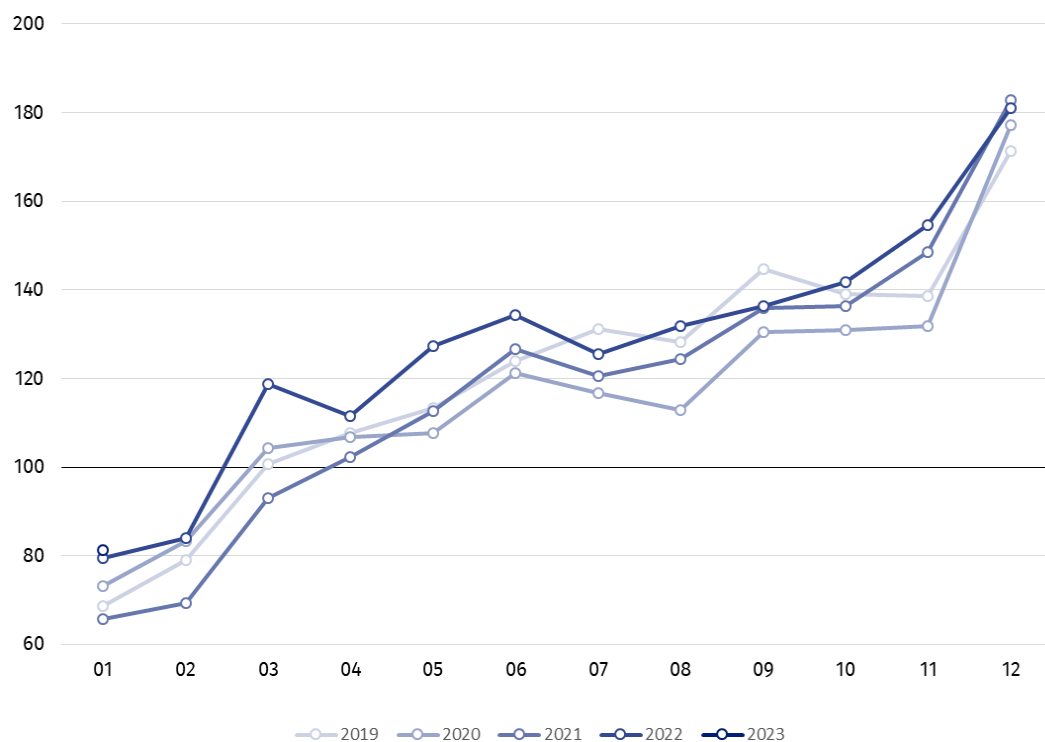
Sales of construction and assembly production in January 2023, compared to the corresponding period of 2022, increased in entities whose basic type of activity were civil engineering works (15.0%) and performing specialised construction activities (7.5%). The decrease was recorded in entities dealing mainly with construction of buildings (10.7%).

Compared with December 2022, a decrease in the value of works carried out was noted in entities dealing mainly with civil engineering works by 66.9%. Decreases were recorded in performing specialised construction activities by 46.9% and in whose basic type of activity was construction of buildings by 41.8%.

Value of construction and assembly production, compared to January 2022, increased both for investment works by 3.5% and restoration works by 0.9% (increases of 21.6% and 19.6% in the year before).

<sup>1</sup> Reported data; comprise enterprises employing over 9 persons, whose the main type of activity is included in the section F "Construction" in accordance with the Polish Classification of Activities (PKD 2007).

**Chart 1. Index numbers of construction and assembly production (constant prices; average monthly base 2015=100)<sup>2</sup>**



Index number of construction and assembly production in January 2023 (in constant prices), compared to the average monthly value of 2015, was 81.3.

After eliminating the seasonal factors, construction and assembly production reached the level by 0.1% lower than in January 2022 and by 7.0% higher in comparison to December 2022.

In case of quoting Statistics Poland data, please provide information: "Source of data: Statistics Poland" and in case of publishing calculations made on data published by Statistics Poland, please include the following disclaimer: "Own study based on figures from Statistics Poland".

<sup>2</sup> Reported data for January 2023.

Prepared by:  
**Statistical Office in Lublin**

**Director Krzysztof Markowski**

Phone: (+48) 695 255 301

Issued by:  
**The Spokesperson for the President of Statistics  
Poland**


**Karolina Banaszek**

Phone: (+48) 695 255 011


**Press Office**


Phone: (+48 22) 608 38 04


**e-mail: [obslugaprasowa@stat.gov.pl](mailto:obslugaprasowa@stat.gov.pl)**


 [www.stat.gov.pl/en/](http://www.stat.gov.pl/en/)

 @StatPoland

 @GlownyUrzadStatystyczny

 gus\_stat

 glownyurządstatystycznygus

 glownyurządstatystyczny

**Related information**

[Statistical Bulletin](#)

[Socio-economic situation of the country](#)

**Data available in databases**

[Knowledge Database - Construction](#)

[Macroeconomic Data Bank](#)

[Macroeconomic indicators](#)

[Local Data Bank](#)

**Terms used in official statistics**

[Sale of construction and assembly production](#)

[Seasonally unadjusted index of sale of construction and assembly production in constant prices](#)

[Seasonally adjusted index of sale of construction and assembly production](#)

[Sale of construction works with an investment character](#)

[Sale of construction works with a restoration character and other works](#)