

# Index numbers of industrial and construction-assembly production in September 2018.<sup>a)</sup>

17.10.2018 r.

**↑ 102.8**

Index number of sold production of industry as compared to September of 2017

In September of 2018, sold production of industry was by 2.8% higher than in September of 2017, whereas an increase of 16.4% was reported in construction-assembly production. In the period January-September of 2018, sold production of industry was by 6.0% higher than in the corresponding period of 2017 which saw a 6.0% increase, whereas construction-assembly production was by 19.8% higher than in the corresponding period of 2017 which saw a 12.9% increase.

September was next month of increase in sold production of industry.

**Table 1. Index numbers of industrial and construction-assembly production in real time (constant prices)**

SPECIFICATION	IX 2018			I-IX 2018 <sup>b)</sup>
	VIII 2018=100	IX 2017=100	monthly average of 2015=100	I-IX 2017=100
<b>INDUSTRY</b>	<b>103.5</b>	<b>102.8</b>	<b>117.3</b>	<b>106.0</b>
Mining and quarrying	102.1	108.2	96.4	101.4
Manufacturing	104.0	102.0	120.6	106.0
Electricity, gas, steam and air conditioning supply	98.9	110.4	92.7	107.9
Water supply; sewerage waste management and remediation activities	99.4	105.5	115.1	105.8
<b>CONSTRUCTION</b>	<b>107.5</b>	<b>116.4</b>	<b>134.4</b>	<b>119.8</b>

<sup>a)</sup> Reported data; comprise enterprises employing over 9 persons.

<sup>b)</sup> Data including final information on production and prices in August and reported data – in September.

## INDUSTRY

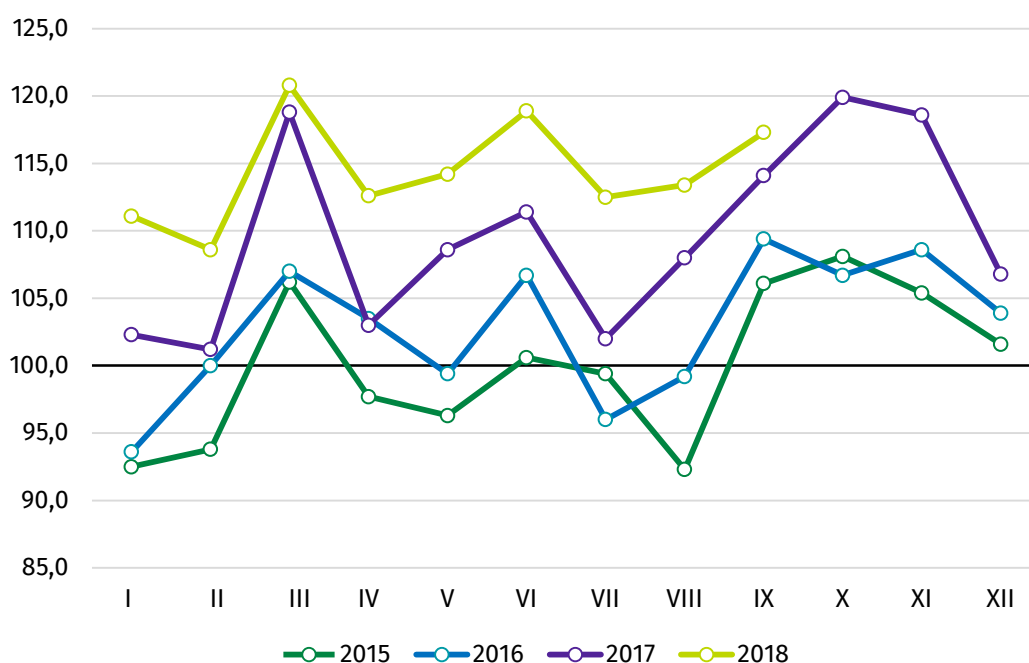
According to the preliminary data, **sold production of industry** in constant prices (in enterprises employing more than 9 persons), in September of 2018, was by 2.8% higher than in the previous year (when an increase of 4.4% was recorded) and by 3.5% higher than in August of 2018. After eliminating the seasonal factors, sold production of industry reached the level higher by 5.4% than in the corresponding month of 2017 and by 0.7% lower as compared to August of 2018.

As compared to September of 2017, an increase in sold production was reported in 24 (out of 34) industry divisions, among others, in electricity, gas steam and air conditioning supply (by 10.4%), in manufacture of metal products (by 8.1%), manufacture of machinery and equipment (by 7.9%), manufacture of electrical equipment (by 7.2%), manufacture of other non-metallic mineral products (by 6.5%), manufacture of paper and paper products (by 5.6%), manufacture of other transport equipment (by 4.3%). A decrease in sold production of industry, as compared to September of 2017, was recorded in 10 divisions, among others, in manufacture of pharmaceutical products (by 28.8%), manufacture of leather and related products (by 16.1%), manufacture of computer, electronic and optical products (by 6.4%), in mining of coal and lignite (by 4.4%).

Increase in sold production of industry in September amounted to 2.8% against a 4.4% increase in the previous year.

Share of production value of industry divisions that saw increase in their index numbers stood at 84.5%.

**Chart 1. Sold production of industry (average monthly level in 2015=100)**



## CONSTRUCTION

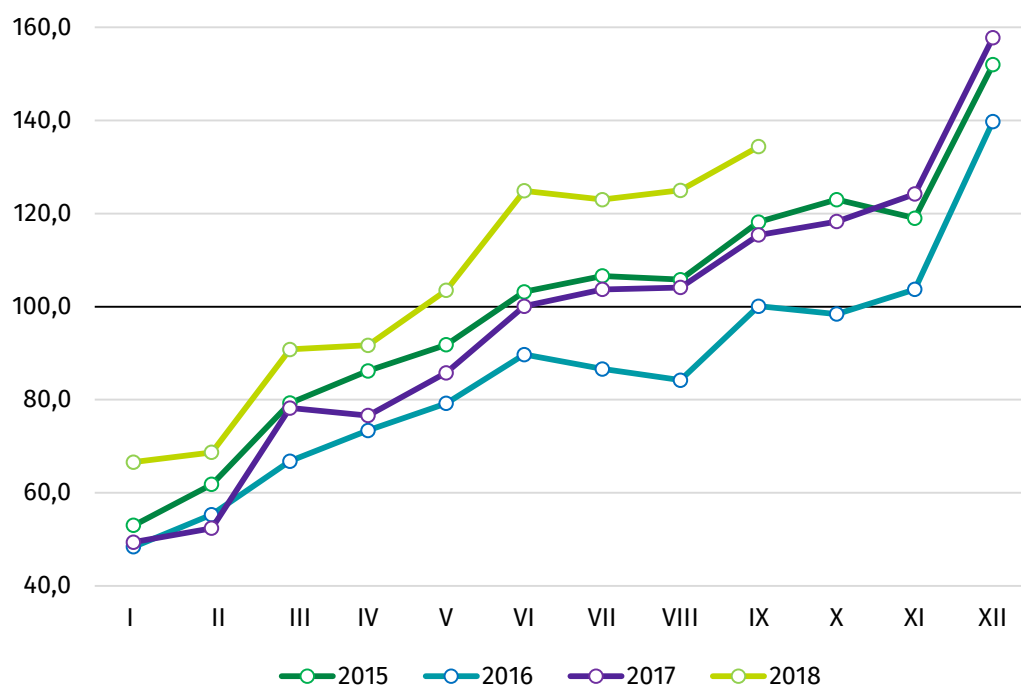
According to preliminary data, construction and assembly production (in constant prices), including investment and repair work, carried out domestically by construction enterprises employing more than 9 persons, was in September of 2018 by 16.4% higher than a year before (against an increase by 15.3% the year before) and by 7.5% lower in comparison to August of 2018. After eliminating the seasonal factors, construction and assembly production reached the level by 19.9% higher than in September of 2017 and by 0.9% higher in comparison to August of 2018.

In comparison to September of 2017 the highest increase (23.1%) in production was recorded in entities whose basic type of activity are civil engineering works. Increases have noticed entities whose basic type of activity is the construction of buildings (18.6%) and entities dealing mainly with the specialised construction activities (3.6%).

Compared with August this year the increase of value works carried out was noted in all divisions of construction: in entities whose basic type of activity is the construction of building (17.8%), in entities performing specialised construction activities (3.4%) and dealing mainly with civil engineering (3.3%).

Since the beginning of the year a large increase in the construction and assembly production has been maintained comparing to the same period of the previous year.

**Chart 2. Construction and assembly production (average monthly level in 2015=100).**



Prepared by:

**Enterprises Department**

**Beata Kaczorowska**

Tel: 22 608 34 16

**e-mail: [B.Kaczorowska@stat.gov.pl](mailto:B.Kaczorowska@stat.gov.pl)**

**Statistical Office in Lublin**

**Zofia Kurlej**

Tel: 81 533 23 01

**e-mail: [Z.Kurlej@stat.gov.pl](mailto:Z.Kurlej@stat.gov.pl)**

Issued by:

**The Spokesperson for the President of  
Statistics Poland**

**Karolina Dawidziuk**

Tel: 22 608 3475, 22 608 30 09

**e-mail: [rzecznik@stat.gov.pl](mailto:rzecznik@stat.gov.pl)**

#### **Press Office**

**tel.:** (+48 22) 608 34 91, (+48 22) 608 38 04

**fax:** (+48 22) 608 38 86

**e-mail: [obslugaprasowa@stat.gov.pl](mailto:obslugaprasowa@stat.gov.pl)**



[www.stat.gov.pl/en](http://www.stat.gov.pl/en)



[@StatPoland](https://twitter.com/StatPoland)



[@GlownyUrzadStatystyczny](https://www.facebook.com/GlownyUrzadStatystyczny)

#### **Related information**

[Statistical Bulletin](#)

[Socio-economic situation of the country](#)

#### **Data available in databases**

[Knowledge Database - Industrial Production](#)

[Knowledge Database - Construction](#)

[Macroeconomic Data Bank](#)

[Macroeconomic indicators](#)

[Local Data Bank](#)

#### **Terms used in official statistics**

[Sold production of industry](#)

[Sale of construction and assembly production](#)

[Seasonally un-adjusted volume index of sold production of industry](#)

[Seasonally adjusted volume index of sold production of industry](#)

[Seasonally unadjusted index of sale of construction and assembly production in constant prices](#)

[Seasonally adjusted index of sale of construction and assembly production](#)