

## Index numbers of industrial and construction - assembly production in April 2018.<sup>a)</sup>

**↑ 109.3**

Index number of sold production of industry as compared to April of 2017

In April of 2018, sold production of industry was by 9.3% higher than in April of 2017, whereas an increase of 19.7% was reported in construction-assembly production. In the period January-April of 2018, sold production of industry was by 6.4% higher than in the corresponding period of 2017 which saw a 5.5% increase, whereas construction-assembly production was by 24.8% higher than in the corresponding period of 2017 which saw a 2.4% increase.

**Table 1. Index numbers of industrial and construction-assembly production in real time (constant prices)**

SPECIFICATION	IV 2018			I-IV 2018 <sup>b)</sup>
	III 2018=100	VI 2017=100	monthly average of 2015=100	I-IV 2017=100
<b>INDUSTRY .....</b>	<b>93.2</b>	<b>109.3</b>	<b>112.5</b>	<b>106.4</b>
Mining and quarrying .....	95.4	102.9	85.6	99.5
Manufacturing .....	94.0	109.5	114.9	106.4
Electricity, gas, steam and air conditioning supply .....	82.4	110.4	101.1	110.4
Water supply; sewerage waste management and remediation activities .....	100.1	105.6	108.6	103.8
<b>CONSTRUCTION.....</b>	<b>101.0</b>	<b>119.7</b>	<b>91.7</b>	<b>124.8</b>

<sup>a)</sup> Reported data; comprise enterprises employing over 9 persons.

<sup>b)</sup> Data including final information on production and prices in March and reported data – in April.

## INDUSTRY

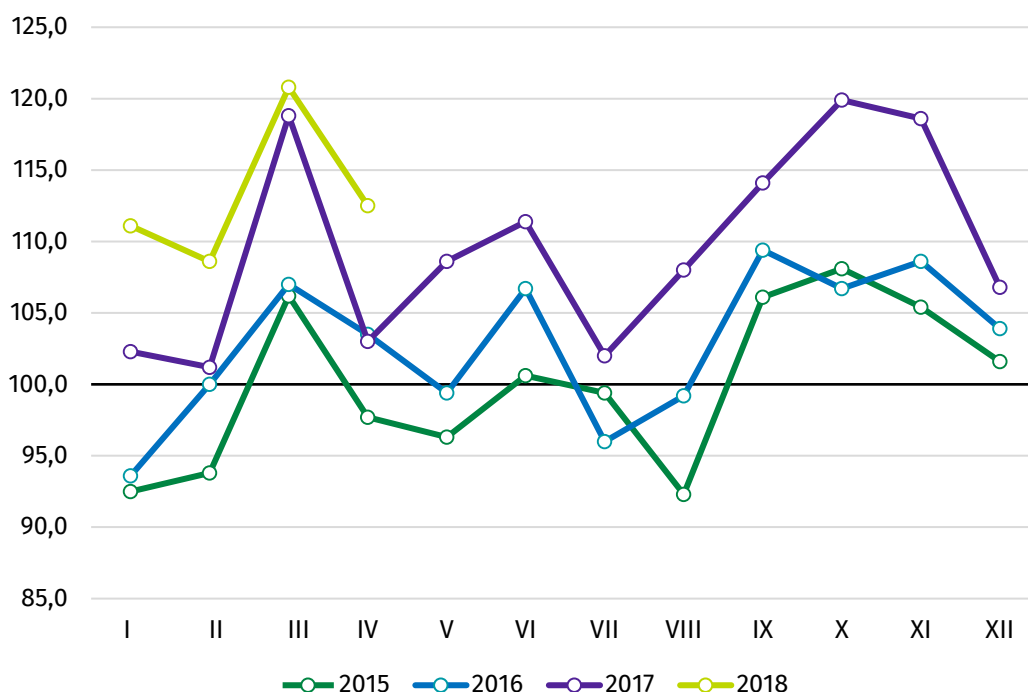
According to the preliminary data, **sold production of industry** in constant prices (in enterprises employing more than 9 persons), in April of 2018, was by 9.3% higher than in the previous year (when an decrease of 0.5% was recorded) and by 6.8% lower than in March of 2018. After eliminating the seasonal factors, sold production of industry reached the level higher by 5.9% than in the corresponding month of 2017 and by 0.5% higher as compared to March of 2018.

As compared to April of 2017, an increase in sold production was reported in 31 (out of 34) industry divisions, among others, in manufacture of coke and refined petroleum products – by 24.6%, manufacture of machinery and equipment – by 17.0%, manufacture of furniture – by 14.9%, manufacture of paper and paper products – by 14.3%, manufacture of other non-metallic mineral products – by 12.7%, manufacture of metal products – by 12.6%, manufacture of products of wood, cork, straw and wicker – by 11.8%, manufacture of electrical equipment – by 11.3%. A decrease in sold production of industry, as compared to April of 2017, was recorded in 3 divisions, among others, in manufacture of pharmaceutical products – by 12.4%.

Increase in sold production of industry in April amounted to 9.3% against a 0.5% decrease in the previous year.

Share of production value of industry divisions that saw increase in their index numbers stood at 98.3%.

**Chart 1. Sold production of industry (average monthly level in 2015=100)**



## CONSTRUCTION

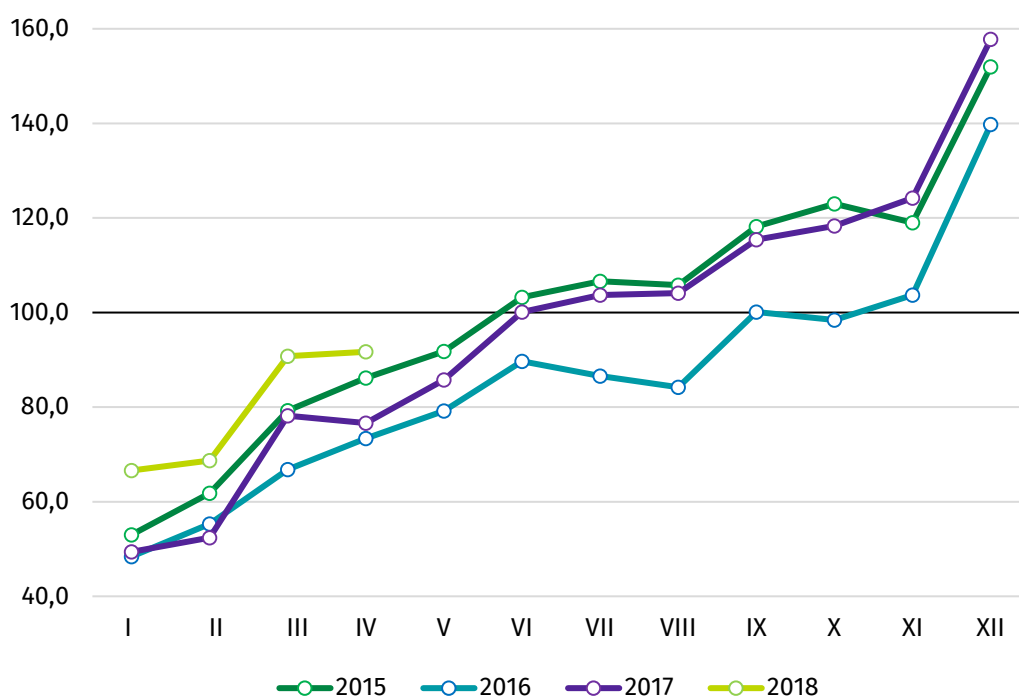
According to preliminary data, **construction and assembly production** (in constant prices), including investment and repair work, carried out domestically by construction enterprises employing more than 9 persons, was in April of 2018 by 19.7% higher than a year before (when an increase by 4.4% was noted) and by 1.0% higher in comparison to March of 2018. After eliminating the seasonal factors, construction and assembly production reached the level by 17.1% higher than in April of 2017 and by 1.2% lower in comparison to March of 2018.

In comparison to April of 2017 an increase in production was recorded in entities whose basic type of activity is the construction of buildings – by 36.0% and in entities dealing mainly with civil engineering – by 22.2%, while a decrease in entities performing specialised construction activities – by 0.5%.

In relation to March of 2018 an increase in production was noted in entities performing specialised construction activities – by 3.3% and in entities dealing mainly with civil engineering – by 1.6%, while a decrease in entities whose basic type of activity is the construction of buildings – by 0.9%.

In April of 2018 the highest increase in the construction and assembly production was noted in annual terms in entities whose basic type of activity is the construction of buildings.

**Chart 2. Construction and assembly production (average monthly level in 2015=100).**



Prepared by:

**Production Department**

**Beata Kaczorowska**

Tel: 22 608 34 16

e-mail: [B.Kaczorowska@stat.gov.pl](mailto:B.Kaczorowska@stat.gov.pl)

**Janusz Kobylarz**

Tel: 22 608 37 67

e-mail: [J.Kobylarz@stat.gov.pl](mailto:J.Kobylarz@stat.gov.pl)

Issued by:

**The Spokesperson for the President of  
Statistics Poland**

**Karolina Dawidziuk**

Tel: 22 608 3475, 22 608 30 09

e-mail: [rzecznik@stat.gov.pl](mailto:rzecznik@stat.gov.pl)

**Press Office**

tel.: (+48 22) 608 34 91, (+48 22) 608 38 04

fax: (+48 22) 608 38 86

e-mail: [obslugaprasowa@stat.gov.pl](mailto:obslugaprasowa@stat.gov.pl)



[www.stat.gov.pl/en](http://www.stat.gov.pl/en)



[@StatPoland](https://twitter.com/StatPoland)



[@GlownyUrzadStatystyczny](https://www.facebook.com/GlownyUrzadStatystyczny)

**Related information**

[Statistical Bulletin](#)

[Information on socio-economic situation of the country](#)

**Data available in databases**

[Knowledge Database - Industrial Production](#)

[Knowledge Database - Construction](#)

[Macroeconomic Data Bank](#)

[Macroeconomic indicators](#)

[Local Data Bank](#)

**Terms used in official statistics**

[Sold production of industry](#)

[Sale of construction and assembly production](#)

[Seasonally un-adjusted volume index of sold production of industry](#)

[Seasonally adjusted volume index of sold production of industry](#)

[Seasonally unadjusted index of sale of construction and assembly production in constant prices](#)

[Seasonally adjusted index of sale of construction and assembly production](#)